



Southside Circle

15 Southside Circle

Price range: \$125M - \$135M



- Located in the City of Southside Place
- Fully gated community
- Neighborhood pool
- Amazing Walk Score of 71
- Mark Twain Elementary School, Pershing Middle School
- 1st Floor living
- Gourmet Kitchens
- Roof Decks and lifetime tile roofs
- Super Efficient L/G heating and A/C with 12 year parts and labor warranty

For More Information

Larry Krim
Sales Consultant

 281-541-2101

 larryk@lovetthomes.com

 facebook.com/lovettathomeshouston

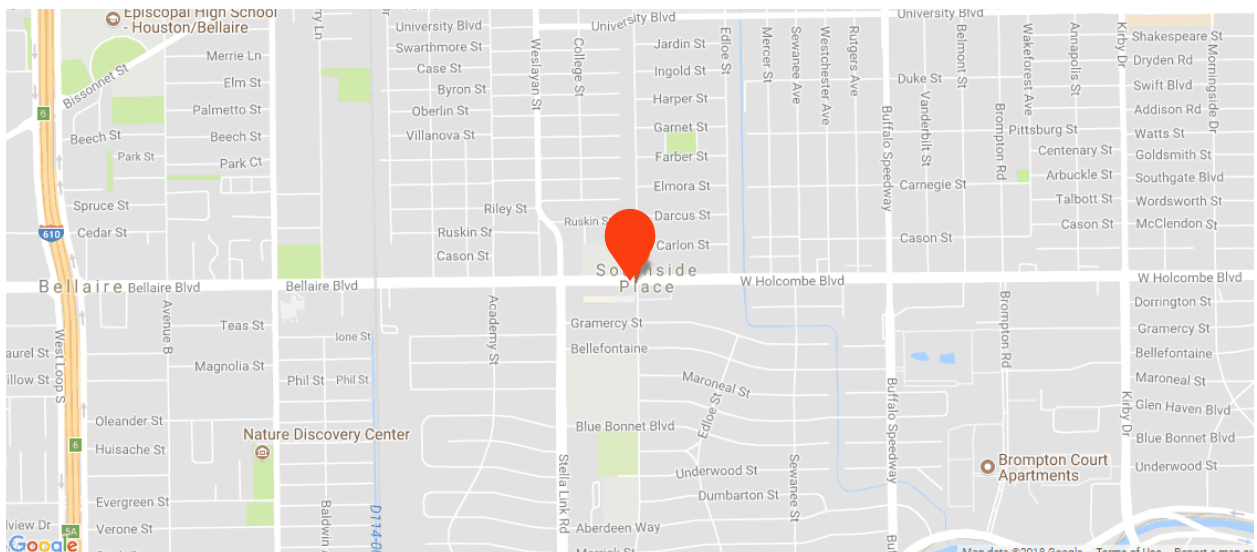
 instagram.com/lovettliving

Site Plan



Artist rendering only. Actual colors and plans may vary significantly.

Location



LOVETT

HOMES

Custom Features

Elegant Exteriors

- Custom designs from Lovett Homes architects
- Modern designs
- Eight-foot entry door
- 2-car garage with ample storage space
- back patio (per plan)
- Professionally designed landscape package
- Tile Roofs
- Energy efficient, double pane windows with Low-E insulated glass
- Elegant exterior gas lighting

Inspiring Interiors

- Oak wood floors
- Double ceiling molding in main living area
- Five inch base molding throughout home
- Eight-foot raised panel interior doors
- Private residential elevator
- Elegant stairways with hardwood tread to third floor
- Smooth sheetrock walls
- 10' or 12' ceilings (per plan)

Luxurious Master Suites

- Single ceiling molding in master bedroom
- Natural Stone tile floors and shower surrounds
- Six-foot garden tub
- Oversized glass enclosed shower
- Dual vanities
- Framed mirrors
- Oversized walk-in closets

Gourmet Kitchens

- Spacious gourmet kitchens
- Granite countertops
- 42-inch flat panel cabinets with decorative molding
- Brookhaven Cabinets
- Gourmet Appliances
- Under mount sinks with garbage disposal
- Natural Stone backsplash
- **Insinkerator** 1/3 horsepower disposal
- Ice maker connection for refrigerator
- Recessed lights with LED bulbs
- Under cabinet lighting

Quality Construction

- Engineered, certified and structural foundations
- Five-point extensive inspection process: structural, frame, exterior, air infiltration and quality assurance
- Fully installed alarm system with home automation
- RG6 digital coax cable for cable and internet
- CAT5 wiring for phone and home internet
- Pre-wire for surround sound in living room and game room

Continuing a policy for constant improvement, builder reserves the right to make modifications including changes, additions or deletions in the features, plans and specifications, and to substitute material of similar quality without notice or prior obligation. *Features may be available only in specific plans and/or in specific communities. The availability of these features is subject to change without notice. Features on homes constructed prior to this printing may have different features. No representation or warranties either expressed or implied are made as to the accuracy of the information herein or with respect to the suitability, usability, feasibility, merchantability or conditions of any property herein described. Rev. 08-26-10 All Rights Reserved. ©InTown Homes 2017



LOVETT HOMES



Eco-Hip™ for Sustainable Green Living

- Lovett Homes Eco-Hip™ program meets and exceeds the New International Energy Code Standard
- 2 x 6 exterior walls increase structural rigidity
- Strategically used engineered wood
- Dual flush toilets
- **R-19 Insulation** in exterior walls
- **R-38 Insulation** in attic
- Air sealing package
- Bosch or Rheem, tank less water heaters
- **CertainTeed Air Renew Drywall** provides mold and moisture resistance in the home while removing VOCs (Volatile Organic Compounds)
- **DOW WEATHERMATE™** weather barrier system
- **LG HVAC system** with Multi speed compressor
- 10 Year parts and labor warranty by LG
- Independent zoning of each floor level for controlled comfort and efficiency
- MERV 10 - high performance media air filter
- Programmable thermostats
- Radiant barrier
- Low-E double pane energy efficient vinyl windows (per community)
- **Energy Star®** appliances
- Duct blaster and blower door testing
- Low VOC paint

Building Partners



Continuing a policy of constant improvement, builder reserves the right to make modifications including changes, additions or deletions in the features, plans and specifications, and to substitute material of similar quality without notice or prior obligation. *Features may be available only in specific plans and/or in specific communities. The availability of these features is subject to change without notice. Features on homes constructed prior to this printing may have different features. No representation or warranties either expressed or implied are made as to the accuracy of the information herein or with respect to the suitability, usability, feasibility, merchantability or conditions of any property herein described. Rev. 08-26-10 All Rights Reserved. ©InTown Homes 2017



9 Southside Circle

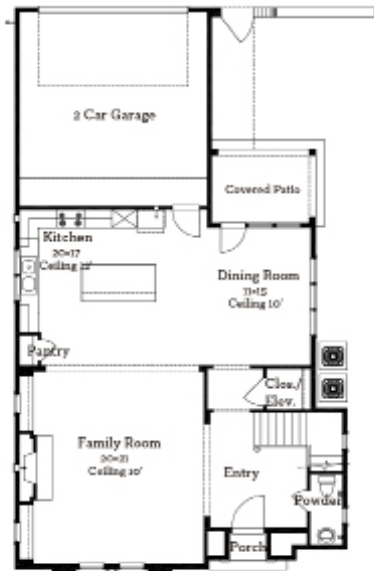
💰 \$1,350,000

🛏 4 Bedrooms

🚿 3.5 Bathrooms

📏 4,063 sqft

- Large open floor plan
- Living room feature 12-foot ceilings and natural wood floors
- Extra large storage spaces
- Super efficient LG heating and A/C with a 12 year parts and labor warranty



First Floor
1277 sqft



Second Floor
1818 sqft



Third Floor
968 sqft

All prices, features and plans are subject to change without notice. Square footage is approximate. No representation or warranties either expressed or implied are made as to the accuracy of the information herein or with respect to the suitability, usability, feasibility, merchantability or conditions of any property herein described. Rev. 08-26-10 All Rights Reserved. ©InTown Homes 2017



15 Southside Circle

💰 \$1,250,000

🛏 4 Bedrooms

🚿 4.5 Bathrooms

📏 3,608 sqft

- Gourmet Kitchen featuring Gaggenau Appliances
- Light bright wood floors
- 12 Foot ceilings on the main floor
- Roof deck with gas off the 3rd floor game room



First Floor
1119 sqft

Second Floor
1557 sqft

Third Floor
932 sqft

All prices, features and plans are subject to change without notice. Square footage is approximate. No representation or warranties either expressed or implied are made as to the accuracy of the information herein or with respect to the suitability, usability, feasibility, merchantability or conditions of any property herein described. Rev. 08-26-10 All Rights Reserved. ©InTown Homes 2017



10 Southside Circle

💰 \$1,250,000

🛏 4 Bedrooms

🚿 4.5 Bathrooms

📏 3,929 sqft

- Huge covered deck overlooking Braes Heights with full sliding doors
- Great Game room and wet bar room
- 2nd floor has flexible room can be used for office library or bed room
- Gourmet kitchen featuring Thermador Pro appliances
- Lifetime tile roofs



First Floor
1145 sqft



Second Floor
1630 sqft



Third Floor
1154 sqft

All prices, features and plans are subject to change without notice. Square footage is approximate. No representation or warranties either expressed or implied are made as to the accuracy of the information herein or with respect to the suitability, usability, feasibility, merchantability or conditions of any property herein described. Rev. 08-26-10 All Rights Reserved. ©InTown Homes 2017



