

— EST 1980 —

# LOVETT

H O M E S

**1280 Wood Hollow Drive**

2,788 sq.ft.

3 bedrooms / 3.5 baths



All prices, features and plans are subject to change without notice. Square footage is approximate. No representation or warranties either expressed or implied. Are made as to the accuracy of the information herein or with respect to the suitability, usability, merchantability or conditions of any property herein described. All rights Reserved. Lovetthomes 2014



— EST 1980 —

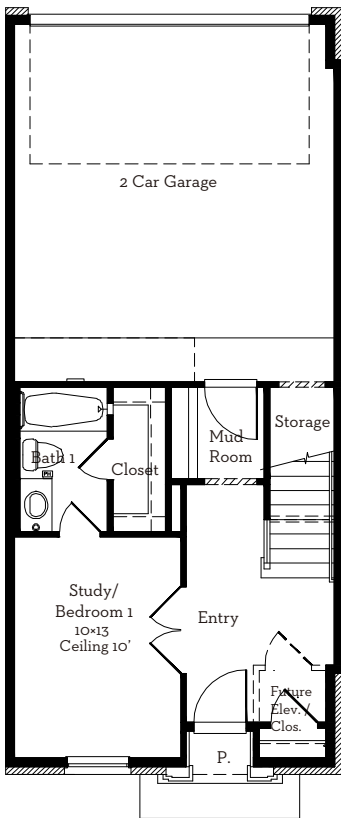
# LOVETT

H O M E S

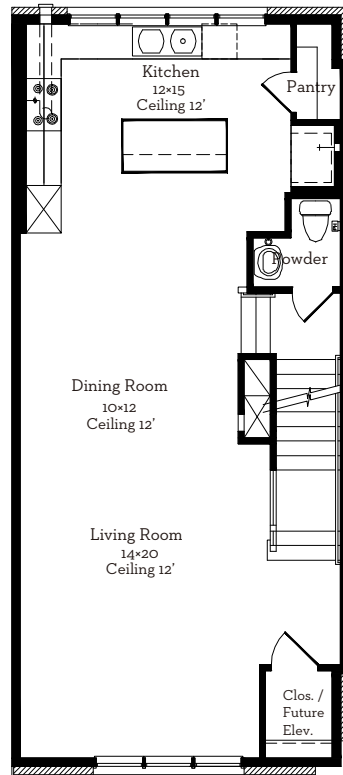
1280 Wood Hollow Drive

2,788 sq.ft.

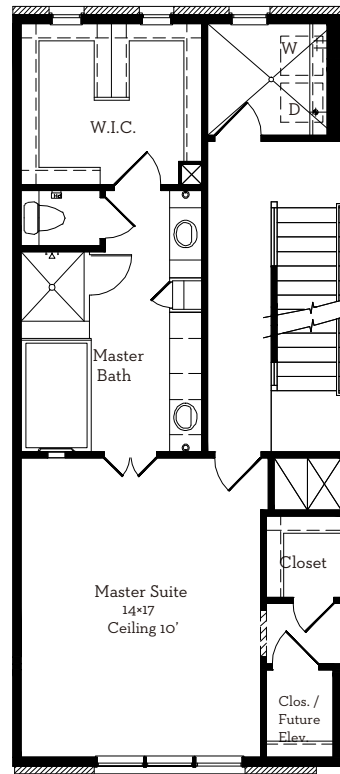
3 bedrooms / 3.5 baths



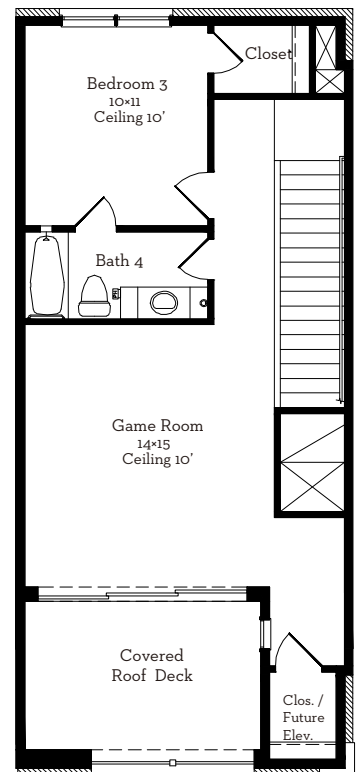
First Floor 431 Sq.Ft



Second Floor 858 Sq.Ft



Third Floor 858 Sq.Ft



Fourth Floor 641 Sq.Ft

All prices, features and plans are subject to change without notice. Square footage is approximate. No representation or warranties either expressed or implied. Are made as to the accuracy of the information herein or with respect to the suitability, usability, merchantability or conditions of any property herein described. All rights Reserved. LovettHomes 2014

